



**2025  
BRANDED MEATS  
AWARDS  
RESULTS CATALOGUE**

## ABOUT US

---

# RICH PAST. VIBRANT FUTURE.

**The Perth Royal Food Awards is brought to you by the Royal Agricultural Society of WA, a not-for-profit organisation celebrating the best of Western Australia.**

We have proudly championed agriculture, education and community for more than 190 years, supporting innovation, excellence and connection across the State. From the iconic Perth Royal Show to education programs, industry awards and community initiatives, we continue to showcase the heart of Western Australia - its people, its produce and its future.

The Perth Royal Food Awards celebrate the finest food and beverages from across Western Australia. With a rich legacy spanning over 150 years, these prestigious competitions highlight excellence, tradition, and innovation within WA's agricultural industry.

The awards provide a platform for producers to showcase their products, compete for coveted honours, benchmark against the market and gain valuable recognition. Each year, we bring together the very best in the industry, rewarding those who set the standard for quality and craftsmanship in food and beverage production.

We invite all West Australian producers to join us in this journey of excellence, competition, and celebration of the region's finest offerings.

## ACKNOWLEDGEMENT OF COUNTRY

The Royal Agricultural Society of Western Australia acknowledges the Traditional Custodians of country throughout the West Australian region and their connections to land, sea and community. We pay our respect to their Elders past, present and future and extend that respect to all Aboriginal and Torres Strait Islander peoples today.



## ABOUT THE 2025 BRANDED MEATS AWARDS

---

# BENCHMARKING YOUR PRODUCT WITHIN THE INDUSTRY

The Perth Royal Branded Meats Awards, beef, pork and lamb, were introduced in 2018 to provide producers with the opportunity to benchmark their products against competitors in their respective industry.

The Royal Agricultural Society of WA thanks our Exhibitors for taking part in this prestigious competition and wishes them every success in the future.

46 EXHIBITS

---

24 EXHIBITORS

---

5 JUDGES

---

4 STEWARDS

---

1 BUTCHER

---

1 CHEF

2025 STATISTICS

# STEPHEN CLARKE

## Chief Judge

Stephen Clarke is a five-time West Australian Chef of the Year and 2012 Australian Culinary Federation National Chef of the Year.

His two-hat restaurant earned exceptional scores, including 17.5/20 from Rob Broadfield. An internationally decorated chef with Australian national culinary team gold medals, Stephen was named a WA hospitality legend in 2019. He's mentored chefs now working with Heston Blumenthal and at Eleven Madison Park, catered for the Royal Family, and showcased WA produce internationally.

With 35 years' industry experience, he currently works as a private chef and consultant.



### PRESIDENT

#### Royal Agricultural Society of WA

John Snowball

### VICE PRESIDENT Royal Agricultural Society of WA

Anne Stroud

### COORDINATORS Perth Royal Food Awards

Amy Francis  
Mariska Grimbeek  
Jess Hutchinson

### CHIEF JUDGE

Stephen Clarke

### JUDGES

Lachlan Chilwell  
Melissa Palinkas  
Rohan Park  
Shane Middleton

### CHIEF STEWARD

Sally McKenzie

### STEWARDS

Karita Greatwich  
Sandip Kalakheti  
Sharon Whyte

### BUTCHER

Graeme Sims

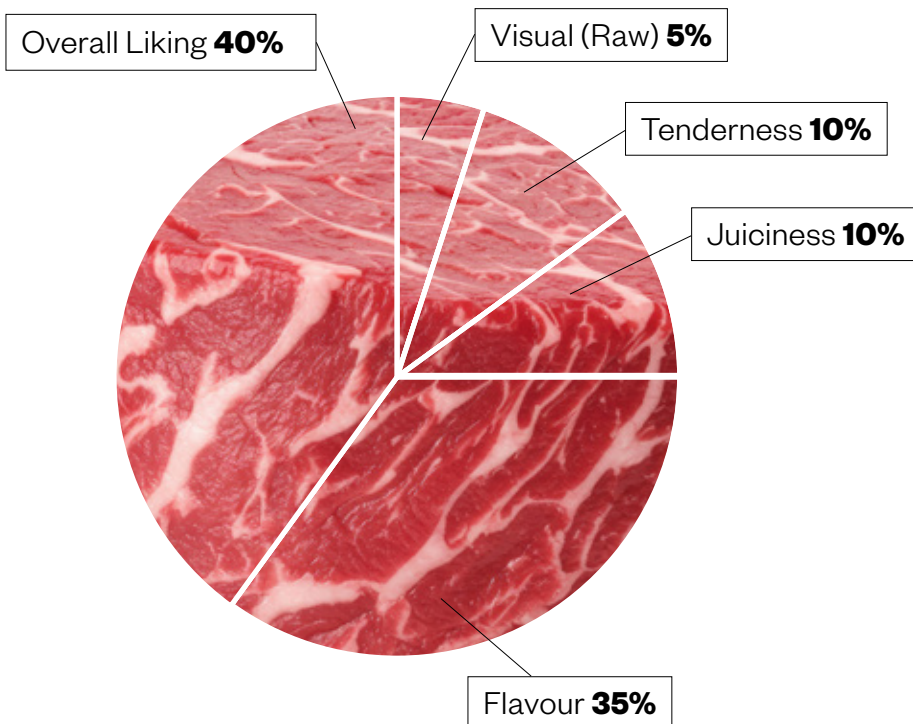
### CHEF

Marco Calderaio





## POINTS FOR AWARDS



## ALLOCATIONS

Gold	90.00+ points
Silver	82.00 – 89.90 points
Bronze	74.00 – 81.90 points

# BRANDED BEEF *Champions*



CHAMPION SINGLE ORIGIN BEEF

---

**Wyloo Pastoral Co**  
**Blackwood Valley Beef**  
Boyup Brook, WA



CHAMPION WA BEEF

---

**Wyloo Pastoral Co**  
**Blackwood Valley Beef**  
Boyup Brook, WA



CHAMPION  
GRAIN-FED BEEF

---

**Stockyard**  
**Stockyard Gold**  
Toombul, QLD



CHAMPION  
EXPORT BEEF

---

**FUTARI Wagyu**  
**Futari Wagyu -**  
**Signature MS 8/9**  
Cottesloe, WA



CHAMPION  
WAGYU

---

**Stockyard**  
**Stockyard Kiwami**  
Toombul, QLD



CHAMPION  
GRASS-FED BEEF

---

**Wyloo Pastoral Co**  
**Blackwood Valley Beef**  
Boyup Brook, WA

# BEEF RESULTS



Place	Class	Exhibitor	Commercial Name	Suburb	State
<b>Gold</b>	Grass-Fed Beef	Wyloo Pastoral Co	Blackwood Valley Beef	Boyup Brook	WA
<b>Silver</b>	Grass-Fed Beef	Western Meat Packers Group	Margaret River Fresh	East Perth	WA
<b>Bronze</b>	Grass-Fed Beef	Coral Coast Beef	Coral Coast Beef	Parkerville	WA
<b>Bronze</b>	Grass-Fed Beef	P.Princi Butchers	Black Angus X Wagyu	Beaconsfield	WA
<b>Gold</b>	Grain-Fed Beef	Stockyard	Stockyard Gold	Toombul	QLD
<b>Gold</b>	Grain-Fed Beef	Western Meat Packers Group	Margaret River Fresh	East Perth	WA
<b>Silver</b>	Grain-Fed Beef	Ryans Quality Meats	Stirling Ranges Beef By Butterfield	Jandakot	WA
<b>Silver</b>	Grain-Fed Beef	Ryans Quality Meats	Stirling Ranges Beef -Bluff Knoll	Jandakot	WA
<b>Silver</b>	Grain-Fed Beef	P.Princi Butchers	Black Angus X Wagyu	Beaconsfield	WA
<b>Bronze</b>	Grain-Fed Beef	Harvest Road Group	Harvey Beef Reserve Angus	Harvey	WA
<b>Gold</b>	Wagyu	Stockyard	Stockyard Kiwami	Toombul	QLD
<b>Gold</b>	Wagyu	Stockyard	Stockyard Black	Toombul	QLD
<b>Gold</b>	Wagyu	Futari Wagyu	Futari Wagyu – Ms 9+ Luxury A5	Cottesloe	WA
<b>Silver</b>	Wagyu	Stockyard	Stockyard Silver	Toombul	QLD
<b>Silver</b>	Wagyu	Lake Preston Beef	Lake Preston Beef	Australind	WA
<b>Silver</b>	Wagyu	Harmony Fine Foods Pty Ltd	Omino Wagyu	Melbourne	VIC
<b>Bronze</b>	Wagyu	P.Princi Butchers	Wagyu X Black Angus	Beaconsfield	WA
<b>Bronze</b>	Wagyu	Harmony Fine Foods Pty Ltd	Black Opal	Melbourne	VIC
<b>Bronze</b>	Wagyu	Penstock Group Pty Ltd T/A Marble King Wagyu	Marble King Wagyu	Acheron	VIC
<b>Gold</b>	Export Beef	Futari Wagyu	Futari Wagyu – Signature Ms 8/9	Cottesloe	WA
<b>Silver</b>	Open Beef	Melaleuka Farm Merchants	Melaleuka Farm	Piara Waters	WA
<b>Bronze</b>	Open Beef	Kerrigan Valley Beef	Kerrigan Valley Beef	Hyden	WA



# BEEF RESULTS

Place	Class	Exhibitor	Commercial Name	Suburb	State
<b>Bronze</b>	Open Beef	Western Meat Packers Group	Margaret River Fresh	East Perth	WA
<b>Champion</b>	Champion Grain-Fed Beef	Stockyard	Stockyard Gold	Toombul	QLD
<b>Champion</b>	Champion Wagyu	Stockyard	Stockyard Kiwami	Toombul	QLD
<b>Champion</b>	Champion Export Beef	Futari Wagyu	Futari Wagyu - Signature Ms 8/9	Cottesloe	WA
<b>Champion</b>	Champion Grass-Fed Beef	Wyloo Pastoral Co	Blackwood Valley Beef	Boyup Brook	WA
<b>Champion</b>	Champion Single Origin Beef	Wyloo Pastoral Co	Blackwood Valley Beef	Boyup Brook	WA
<b>Champion</b>	Champion WA Beef	Wyloo Pastoral Co	Blackwood Valley Beef	Boyup Brook	WA

# PORK RESULTS



Place	Class	Exhibitor	Commercial Name	Suburb	State
<b>Bronze</b>	Free Range Pork	Linley Valley Pork	Linley Valley Free Range Pork	Fremantle	WA
<b>Silver</b>	Open Pork	Black Label Berkshire	Black Label Berkshire	Bedforddale	WA
<b>Silver</b>	Open Pork	Linley Valley Pork	Linley Valley Pork	Fremantle	WA
<b>Bronze</b>	Open Pork	Gumshire Pork	Gumshire Pork	Keyneton	SA
<b>Bronze</b>	Open Pork	Corrigin Meatworks	Corrigin Meatworks	Bedforddale	WA
<b>Bronze</b>	Export Pork	Black Label Berkshire	Black Label Berkshire	Bedforddale	WA
<b>Bronze</b>	Export Pork	Linley Valley Pork	Linley Valley Pork	Fremantle	WA

Please note: no Champions were awarded in 2025

# BRANDED LAMB *Champions*



## CHAMPION WA LAMB

---

### **Wakedale Farm**

**Wakedale Farm**

Beermullah, WA

---



## CHAMPION EXPORT LAMB

---

### **Amelia Park**

**Amelia Park**  
Fremantle, WA

SPONSORED BY

---



## CHAMPION OPEN LAMB

---

### **Wakedale Farm**

**Wakedale Farm**  
Beermullah, WA

# LAMB RESULTS



Place	Class	Exhibitor	Commercial Name	Suburb	State
Gold	Open Lamb	Wakedale Farm	Wakedale Farm	Beermullah	WA
Bronze	Open Lamb	Amelia Park	Amelia Park	Fremantle	WA
Gold	Export Lamb	Amelia Park	Amelia Park	Fremantle	WA
Silver	Export Lamb	Wagyu Lamb Pty Ltd	Mottainai Lamb	Guildford	WA
Champion	Champion Export Lamb	Amelia Park	Amelia Park	Fremantle	WA
Champion	Champion Open Lamb	Wakedale Farm	Wakedale Farm	Beermullah	WA
Champion	Champion Wa Lamb	Wakedale Farm	Wakedale Farm	Beermullah	WA



**ROYAL  
AGRICULTURAL  
SOCIETY**  
*of WA*



---

Claremont Showground  
1 Graylands Road, Claremont WA 6010

---

(08) 6263 3100  
foodawards@raswa.org.au

---

[raswa.org.au](http://raswa.org.au)  
[perthroyalfoodawards.raswa.org.au](http://perthroyalfoodawards.raswa.org.au)